

Technical note T152: New 'TalyMap' analysis type available in Ultra

Ultra

New 'TalyMap' analysis type available in Ultra

Robert Burton, Applications Engineer

Introduction

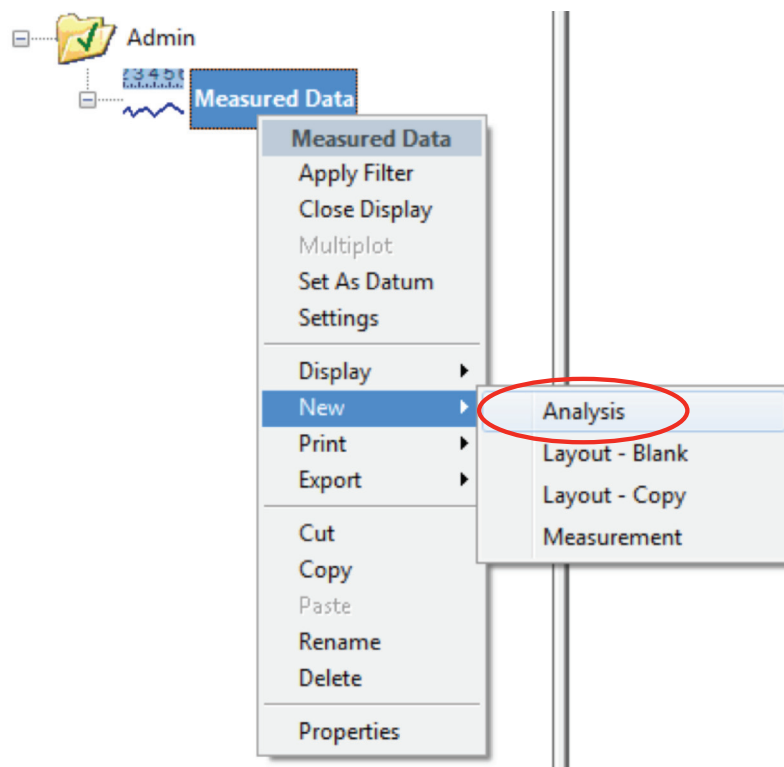
TalyMap is a powerful piece of analysis software designed to complement and expand upon Ultra's capabilities and now the two can be seamlessly connected using the new 'TalyMap' analysis function in Ultra. The new feature works in the same way as any other analysis in Ultra and is available for all types of data (surface finish, roundness, straightness etc.).

Advantages

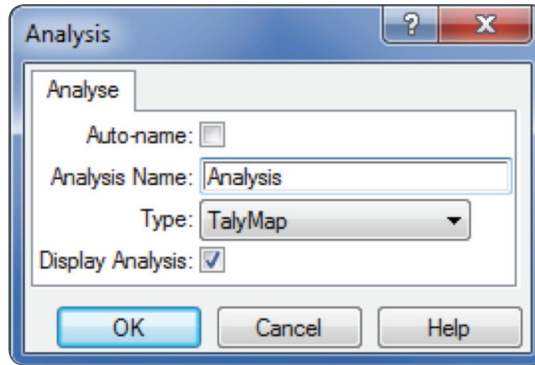
- Access to all TalyMap parameters and analysis capabilities
- Q-Link can use results calculated in TalyMap
- Pre-specify templates for analysis
- Customisable multipage layout

Procedure

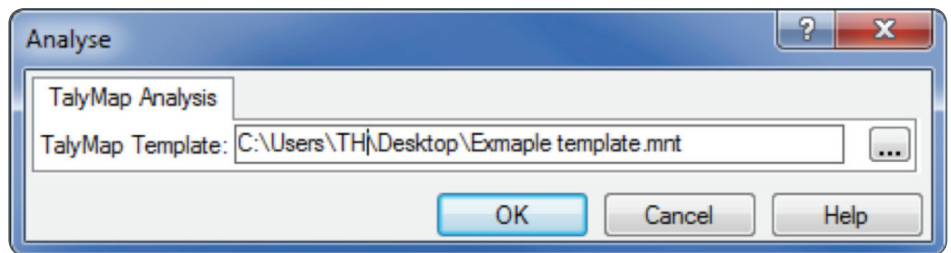
- 1 Select and right mouse click on the data to be analysed and select a new analysis (It is possible to select multiple measurements for the analysis).



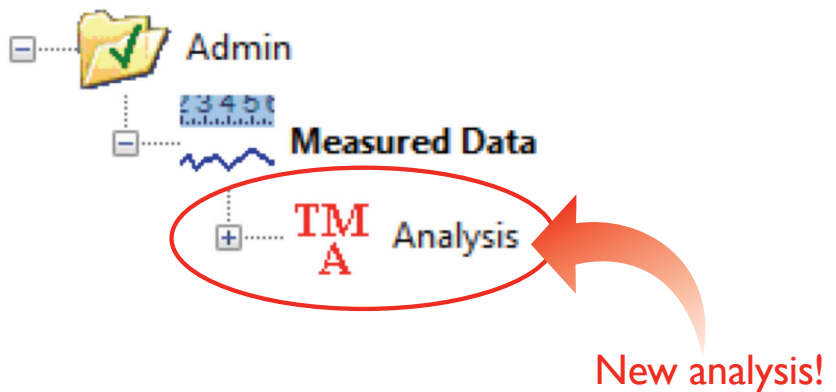
- 2 Select and right mouse click on the data to be analysed and select a new analysis (It is possible to select multiple measurements for the analysis).



- 3 Select the TalyMap template to apply to the measurement data.
Note: The data is sent to TalyMap in .prf3 format, therefore it may be required to convert data to linear prior to the analysis. This also means the template should be created using data in this format.



- 4 The analysis is done in a new TalyMap document which is accessible through the Ultra folder structure.



Q-Link tip

TalyMap parameters are shown in millimetres in Q-Link by default. Units can be customised by changing them on the **Characteristic settings** tab in the **Testplan** settings. Q-Link can use both μm and um for microns.

Summary

This type of analysis functions in the same way as any other Ultra analysis. Simply select the analysis, specify the settings and view the results! This analysis type is fully integrated with Q-Link, any results calculated in the TalyMap template are treated the same as Ultra parameters.



Taylor Hobson UK
(Global Headquarters)
PO Box 36, 2 New Star Road
Leicester; LE4 9JD, England

Tel: +44 116 276 3771
taylor-hobson.sales@ametec.com



Taylor Hobson France
Tel: +33 130 68 89 30
taylor-hobson.france@ametec.com



Taylor Hobson Germany
Tel: +49 611 973040
taylor-hobson.germany@ametec.com



Taylor Hobson India
Tel: +91 80 67823200
taylor-hobson.india@ametec.com



Taylor Hobson Italy
Tel: +39 02 946 93401
taylor-hobson.italy@ametec.com



Taylor Hobson Japan
Tel: +81 36809 2406
taylor-hobson.japan@ametec.com



Taylor Hobson Korea
Tel: +82 31 888 5255
taylor-hobson.korea@ametec.com



Taylor Hobson China Beijing Office
Tel: +86 10 8526 2111
taylor-hobson.beijing@ametec.com



Taylor Hobson China Shanghai Office
Tel: +86 21 58685111-110
taylor-hobson.shanghai@ametec.com



Taylor Hobson Singapore
Tel: +65 6484 2388 Ext 120
taylor-hobson.singapore@ametec.com



Taylor Hobson USA
Tel: +1 630 621 3099
taylor-hobson.usa@ametec.com